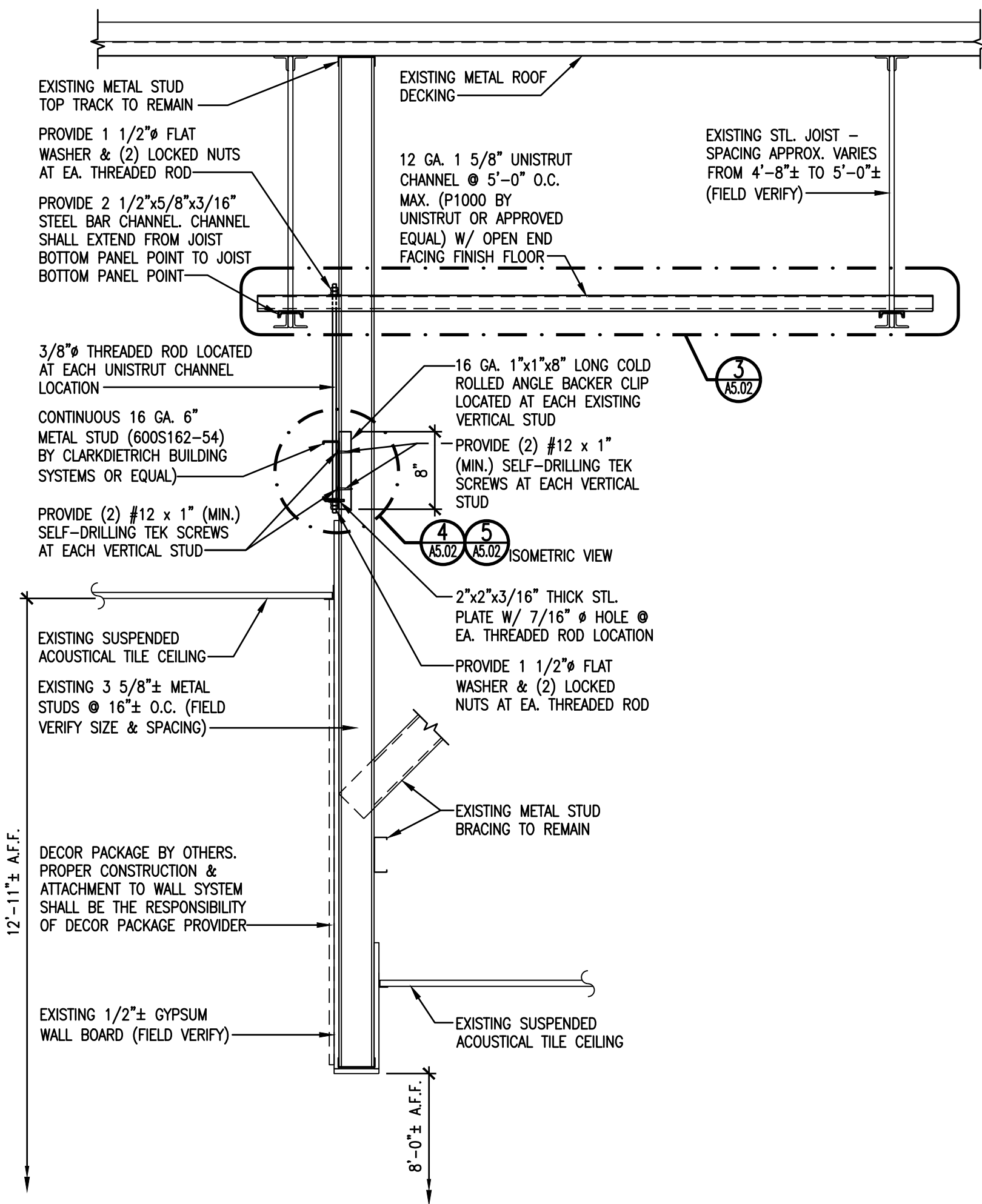
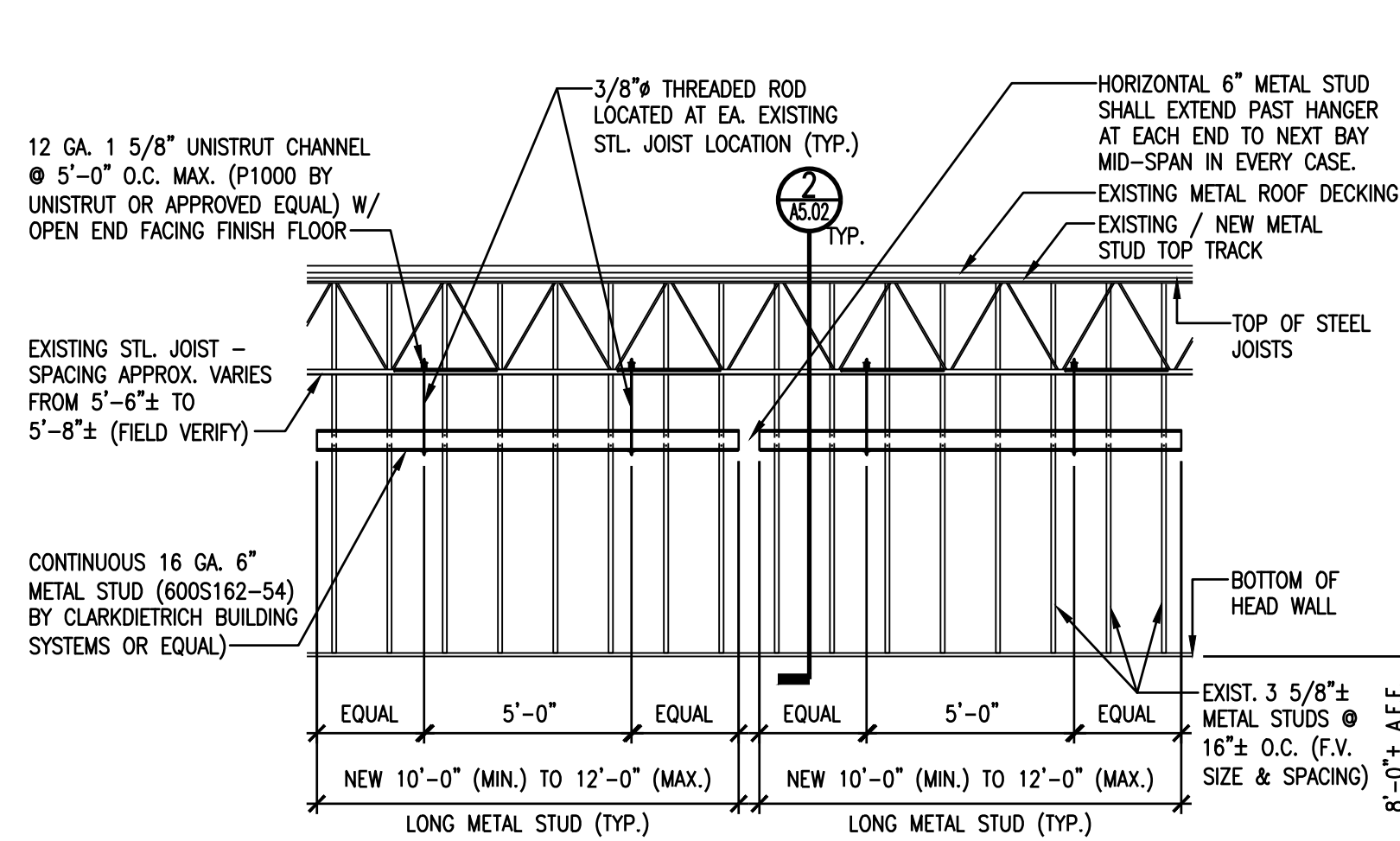


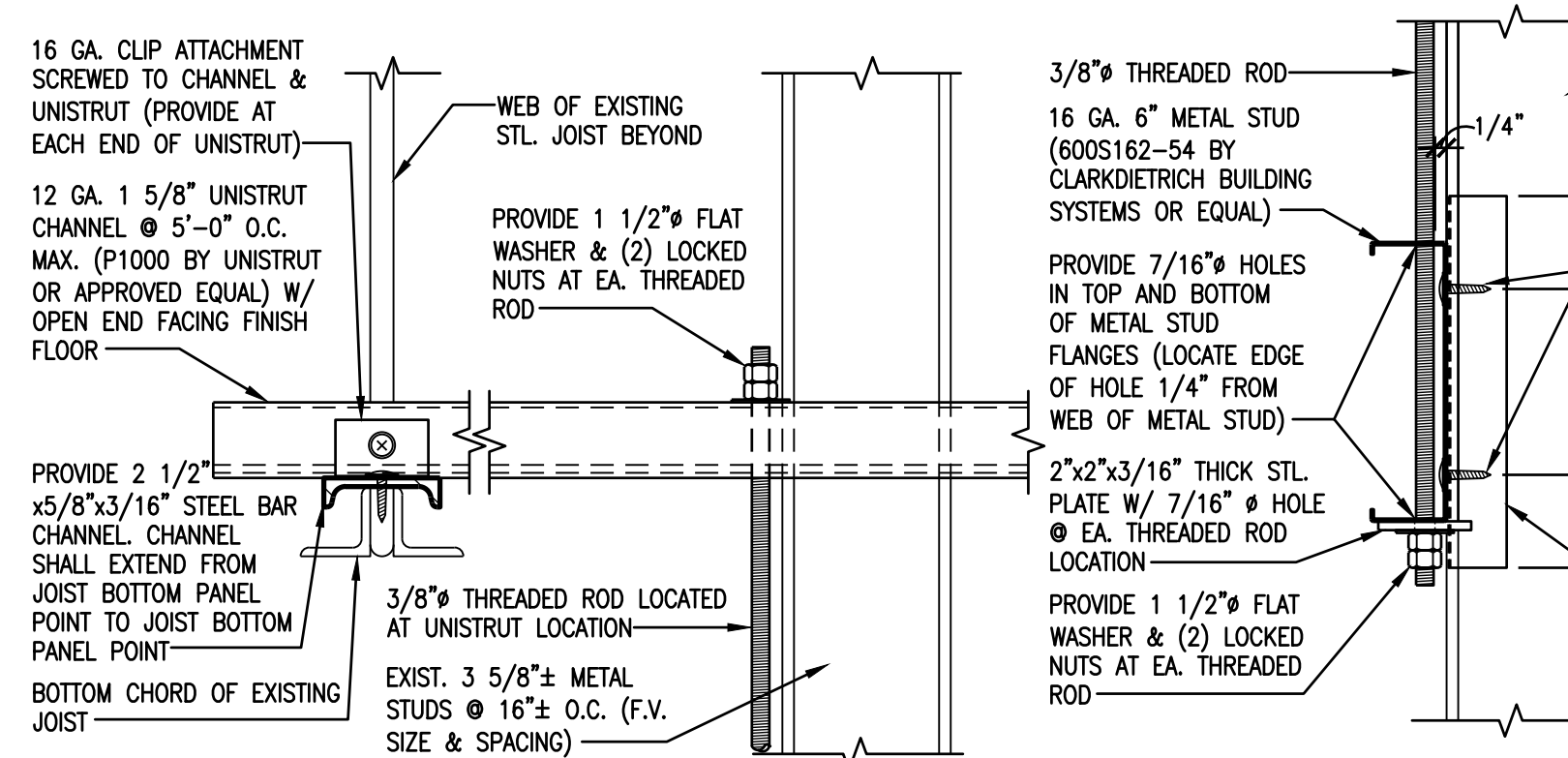
1
11/04/16/02
CEILING MOUNTED BOAT RACK DETAIL
1" = 1'-0"



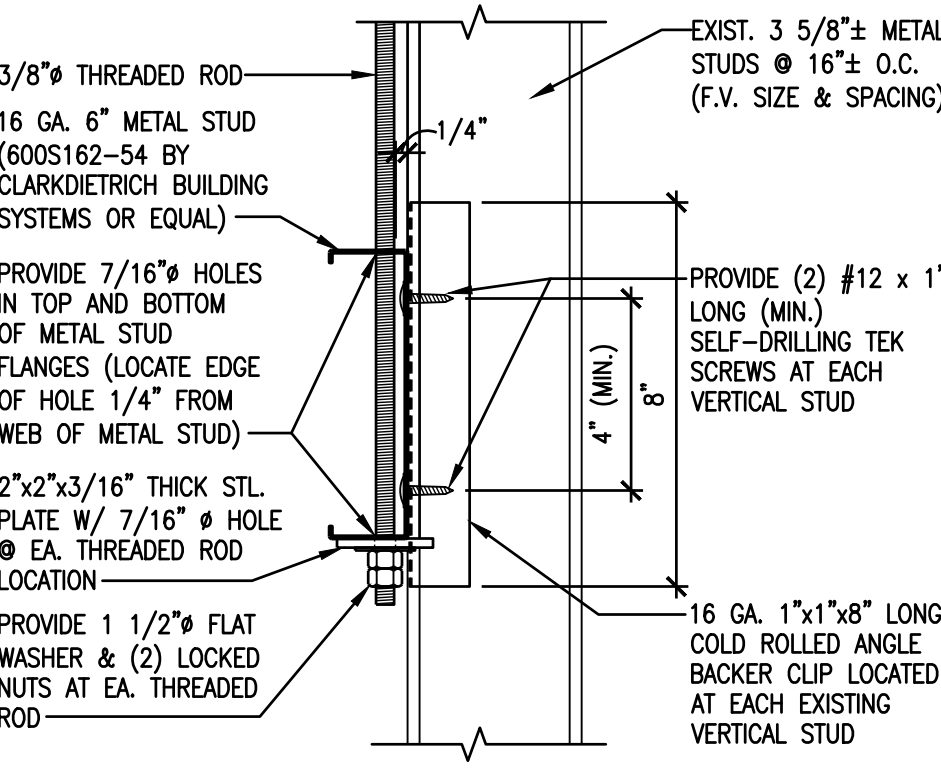
2
16/02/16/02
HEAD WALL ADDED SUPPORT DETAIL
1' = 1'-0"



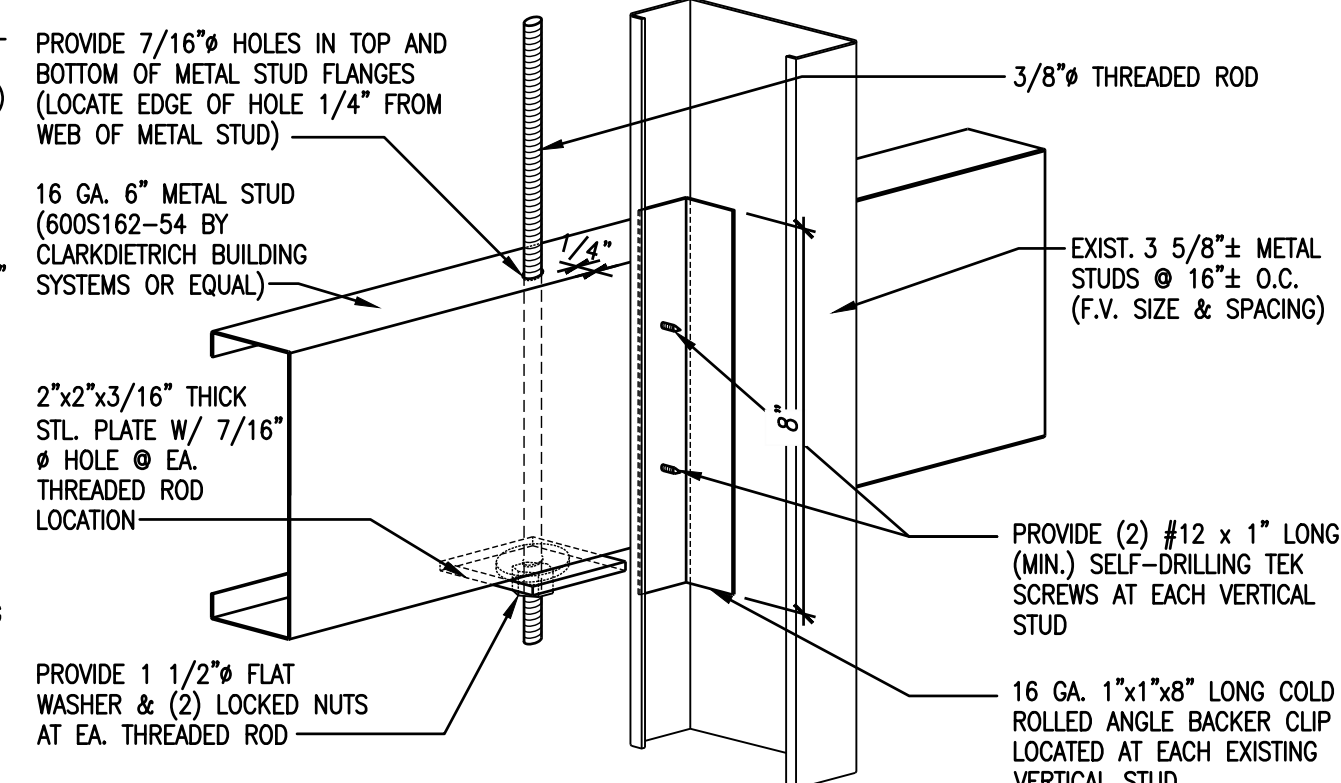
A
11/04/16/02
TYPICAL HEAD WALL SUPPORT ELEVATION
1/4" = 1'-0"



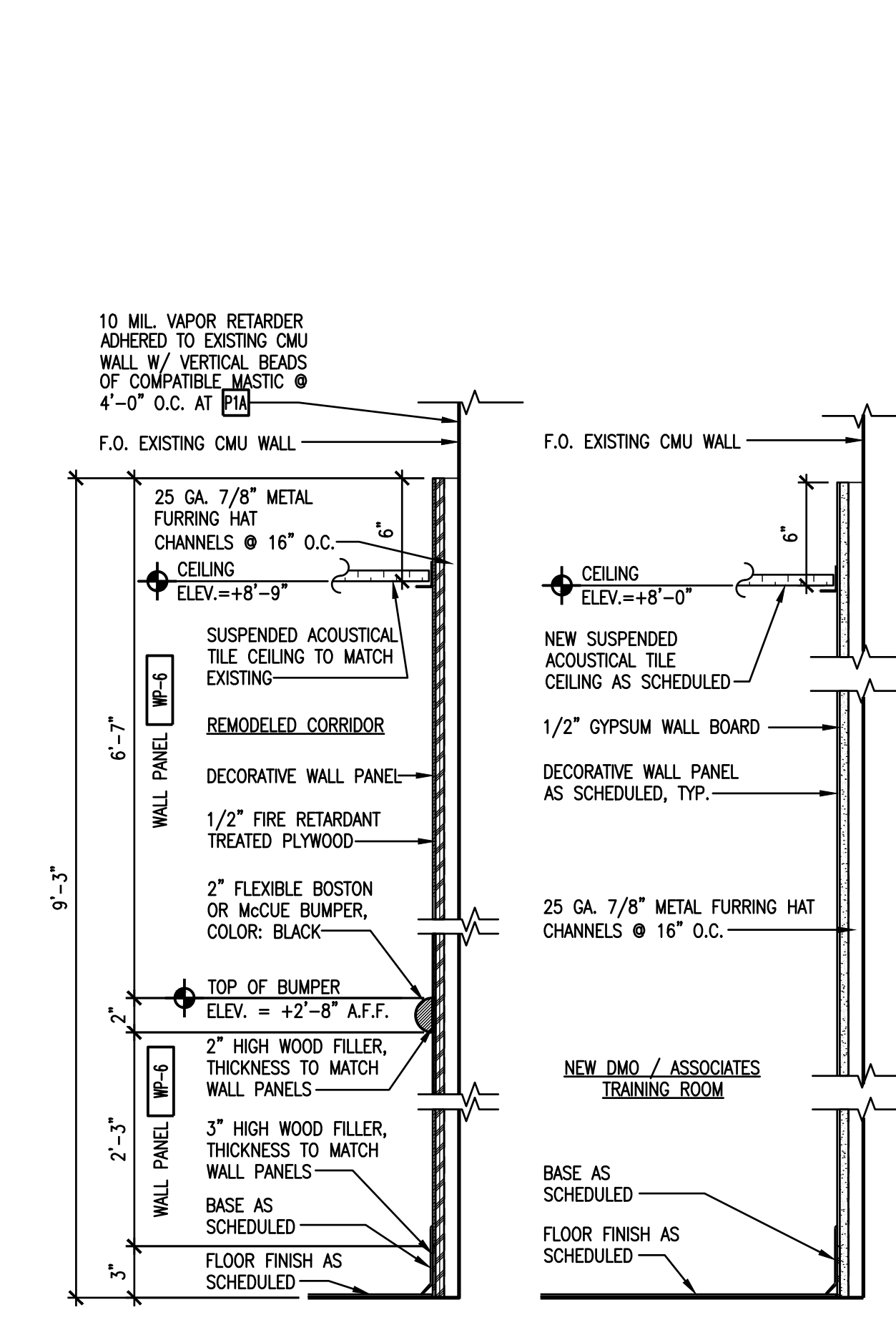
3
16/02/16/02
CONNECTION DETAIL
3" = 1'-0"



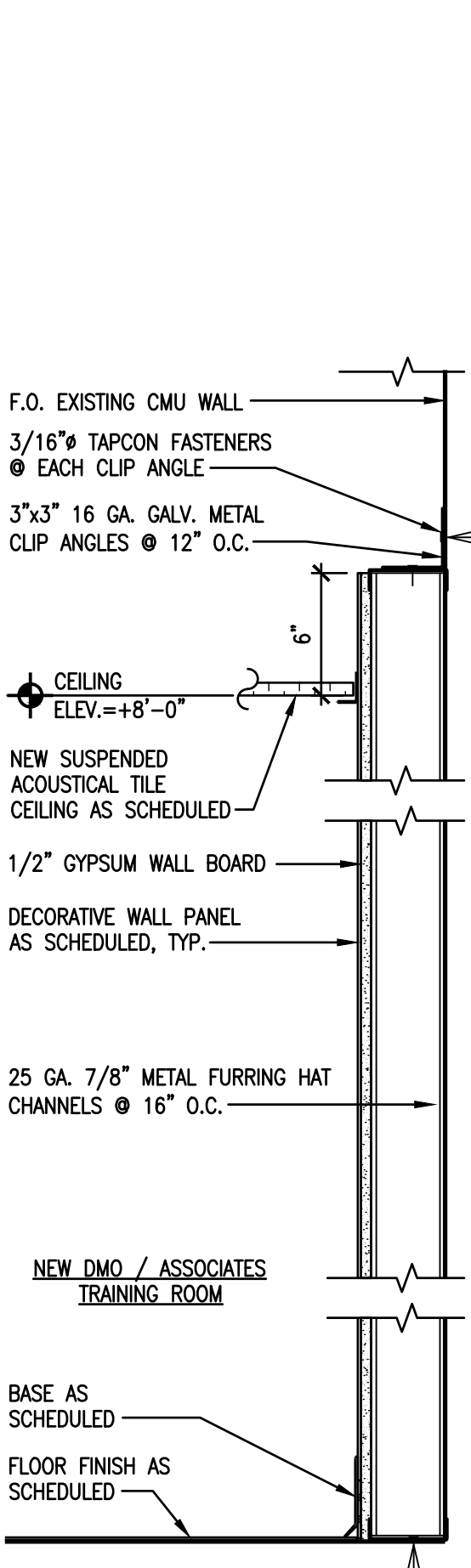
4
16/02/16/02
CONNECTION DETAIL
3" = 1'-0"



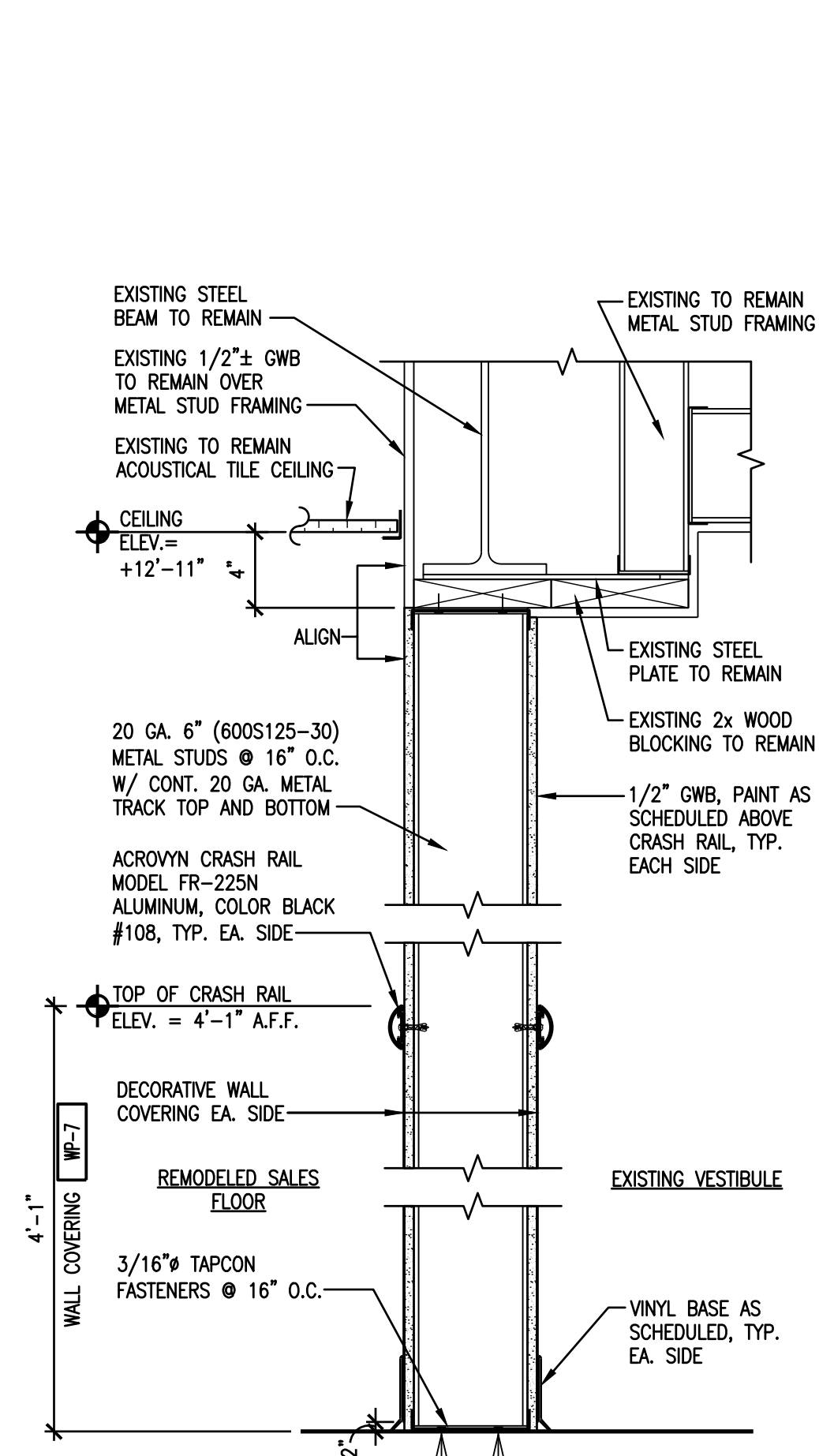
5
16/02/16/02
CONNECTION DETAIL
3" = 1'-0"



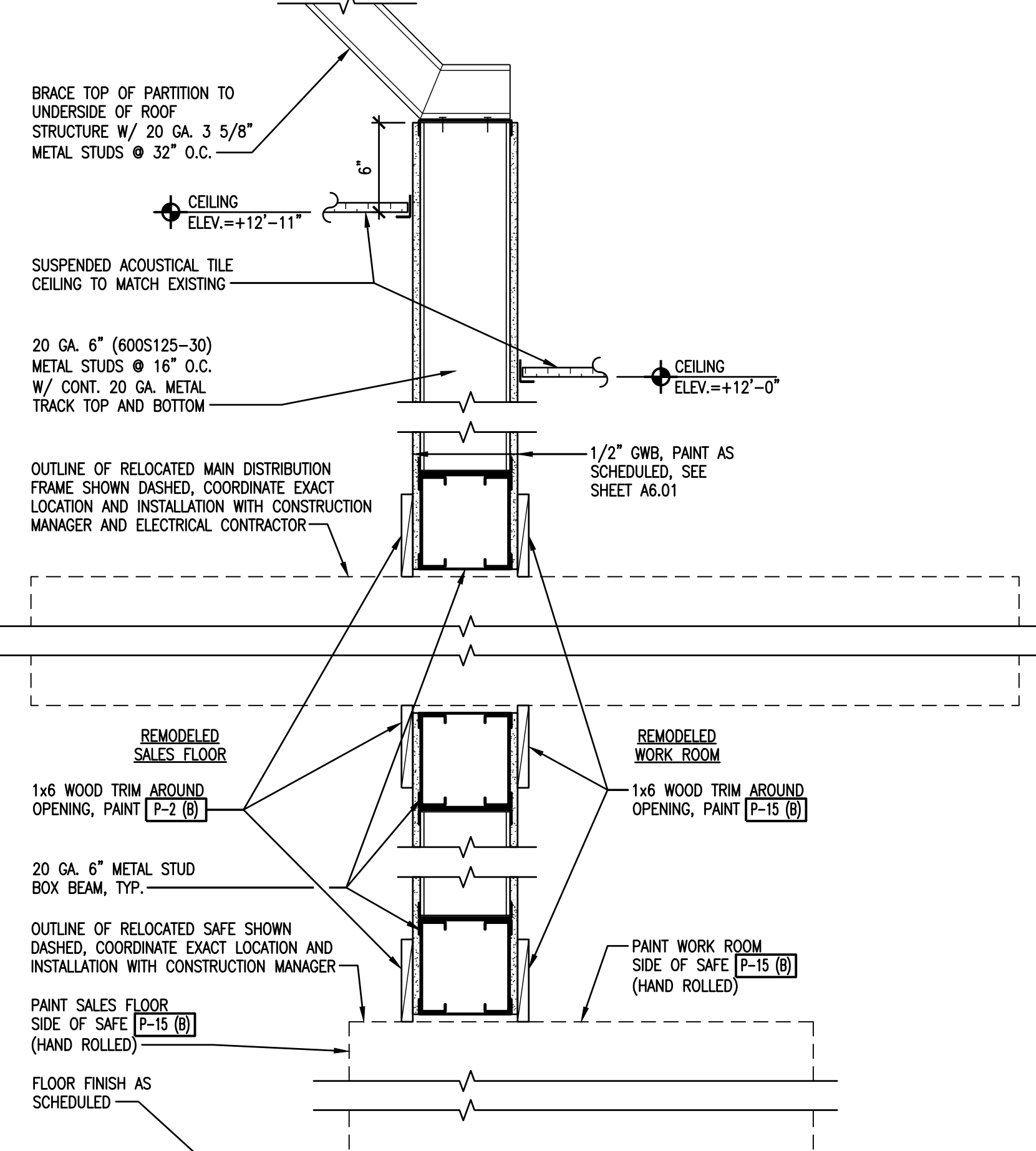
P1



P3



P4



6
11/04/16/02
WALL SECTION THROUGH SAFE
1 1/2" = 1'-0"

REVISIONS	NO.	DESCRIPTION	DATE
-----------	-----	-------------	------

Riddick Fiedler Stern
Architecture ■ Planning ■ Interior Design
261 West Bute Street ■ Norfolk, VA 23510 ■ (757) 627-2791



FOOD LION 2560
7514 NORTH POINT ROAD
EDGEMERE, MD

DETAILS

DRAWING FILE NAME
2560A5.02_00
RFS JOB #
2019-042
DATE
02/21/20
A5.02
19 OF 21